

# oxygenics® e-shower

Economical  
Energy saving  
Eco-waterwise  
Exhilarating



## Patented Technology

Oxygenics are the only high calibre showerheads available with sensationally powerful spray, reduced energy and water consumption and a stylish and durable design.

## Sustainability

Water heating accounts for about 40% of the average household electricity bill. Using a water saving showerhead such as Oxygenics with a flow rate under 10 litres per minute will save a large proportion of this cost, whilst reducing carbon emissions.

Save money *and* save resources.

## Security

The e-Shower can be supplied with a set screw enabling it to be locked to the shower arm, thus preventing it from being removed. No more costly replacement programmes.

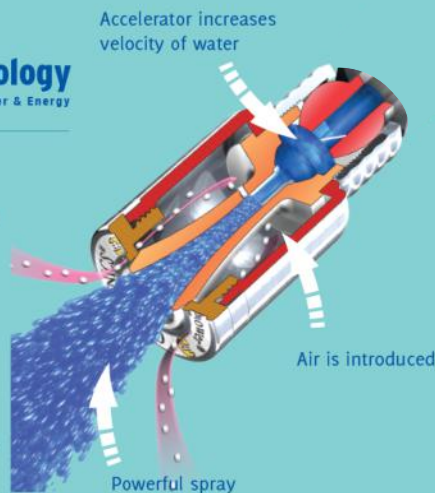
## High Performance Showering

Designed to save up to 70% of water used by standard showerheads, the Oxygenics e-Shower ensures a superior and refreshing shower experience. The moment you turn on the water you'll realise that this is like no other showerhead you've ever experienced.



There is no other showerhead brand that uses the patented core technology of Oxygenics showerheads, and no other water and energy saving showerheads are able to deliver the same powerful and exhilarating results.

The unique and innovative design rapidly spins the water increasing its velocity and then injects air into the stream. The result is a powerful oxygenated spray that feels amazing while saving water and energy.



## Features

Water Saving



Money Saving



Easy Install



Lifetime Warranty



The average household every year can save up to

- R5 000 in utility costs
- 100 000 litres of water
- 3 megaWatt hours of electricity
- 3 tons of carbon emissions

Find your Oxygenics eco-showerhead at...

www.oxygenics.co.za  
info@oxygenics.co.za  
+27 (0)21 7901628  
39 Whittlers Way  
Hout Bay Cape Town



# e-shower

Oxygenics showerheads meet ANSI standard (American National Standards Institute) testing and materials specifications A112.18.1M-1996).

Designed to function appropriately at pressures no less than 200 kPa. Constructed to withstand pressures of 2000 kPa.

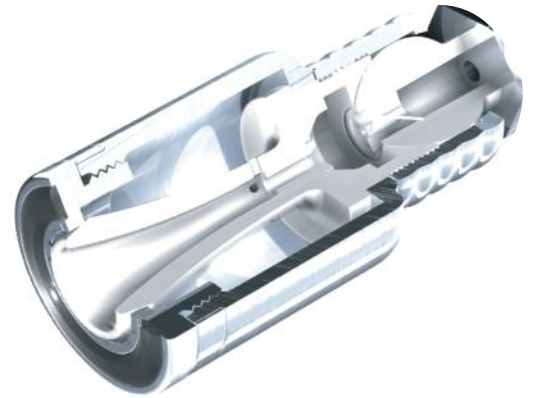
The flow device is of single orifice design. The internal components are constructed of injection moulded Delrin acetal (a du Pont material similar to Teflon). The pieces are machine pressed into the base and cannot be removed with a straight pushing or pulling force of less than 45 kg.

The nozzle uses a Venturi system consisting of 16 air entrance ports, which allow air to increase the spray force. Oxygen levels in the water are increased as well.

The base utilises a ball and socket allowing for adjustment. The ball is made from Delrin acetal. The seating washer is designed to seal around the ball swivel when compressed in assembly. The base connector is made from chromed dezincification resistant brass. The base fits a standard 15mm BSP threaded shower arm.

The outer covering shell is constructed of high quality chromed ABS plastic, which enhances the showerhead's appearance and muffles the Venturi system.

This showerhead is guaranteed for life against defective materials and workmanship, as well as clogging due to lime-scale.



## Features & Benefits

### Self-pressurising technology

Increased water velocity and air induction = more shower pressure. The patented design ensures an invigorating pressurised shower spray, with water supply pressures over 200 kPa.

### Saves water and money

Oxygenics uses at least 50% less water and energy compared to standard showerheads. Each showerhead can save up to 100 000 litres of water, with enormous savings in electricity consumption and utility costs.

### No Clogging - zero maintenance

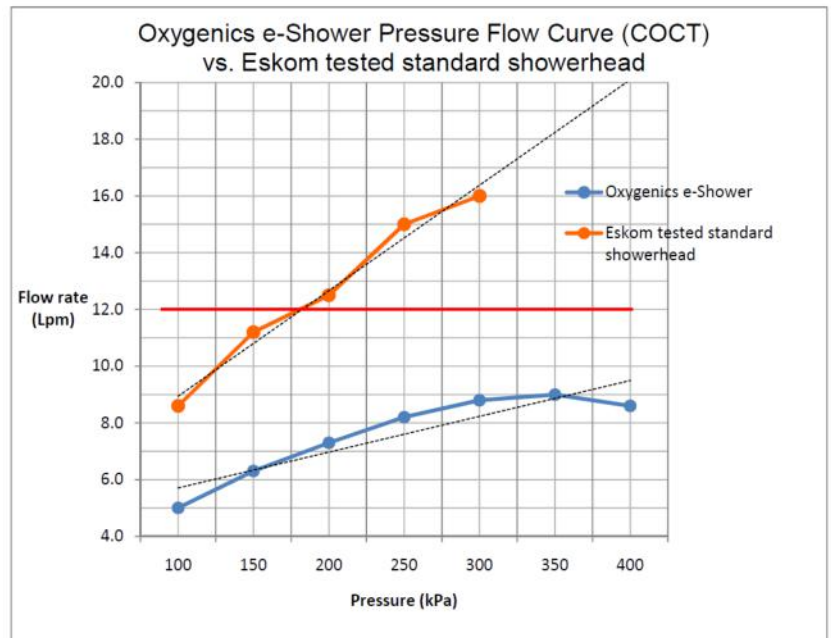
The internal components are made from Delrin - a material made by DuPont similar to Teflon, increasing durability and eliminating clogging through buildup of limescale. No cleaning or expensive maintenance bills.

### Limited lifetime warranty

The Oxygenics e-Shower is covered by a limited lifetime warranty against defects in materials or workmanship, as well as clogging through limescale. For warranty details, please visit [www.oxygenics.co.za](http://www.oxygenics.co.za)

### Security

The e-Shower can be supplied with a set screw which allows the showerhead to be locked to the shower-arm, preventing removal.



## Product Specs

Weight (g) - 180  
Dimensions (mm) - 50 x 50 x 115

## Packaging Specs

**Package dimensions**  
White box (mm) - 60 x 60 x 130  
Carton quantity - 24 boxed units  
Carton weight (kg) - 4.5  
Carton (mm) - 140 x 370 x 250

**Product Specs**  
Weight (g) - 180  
Dimensions (mm) - 50 x 50 x 115

Flow restrictors have been placed in showerheads by manufacturers as a way to reduce flow rates below 10 litres per minute (LPM). This method of water restriction significantly decreases water pressure creating unsatisfactory shower performance. Oxygenics showerheads contain no removable restrictors and adapt to the incoming water pressure to use only what is necessary while still providing an extremely enjoyable and pressurised shower at less than 10 LPM which also saves a significant amount of water, energy and money.

The graph compares the water flow rate of an Oxygenics showerhead and an average water wasting showerhead, at varying pressure. It can be seen that large reductions in flow rates can be achieved. The tests were performed by the Water Meter Verification Laboratory of the City of Cape Town. Oxygenics showerheads have also been tested by Eskom.

Find your Oxygenics eco-showerhead at...

[www.oxygenics.co.za](http://www.oxygenics.co.za)  
[info@oxygenics.co.za](mailto:info@oxygenics.co.za)  
+27 (0)21 7901628  
39 Whittlers Way  
Hout Bay Cape Town